

LIFT BAR

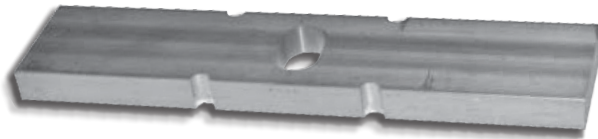
FOR CLUB CAR PRECEDENT

MADE IN THE
★USA★
WITH PRIDE

BAR TO LIFT PRECEDENT CAR FRAME FOR LARGER WHEELS WITH LOW-PROFILE TIRES

INCLUDED:

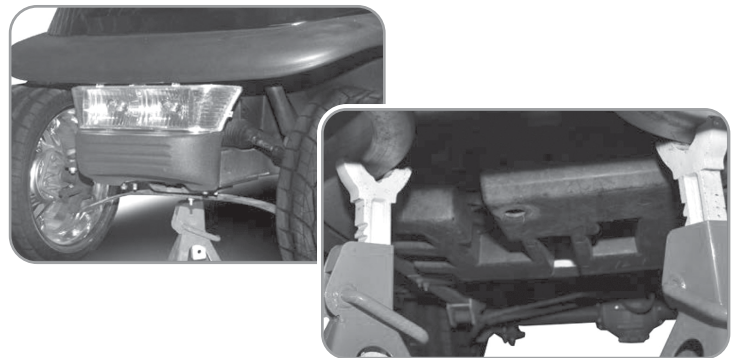
- Lift Bar
- M10x50 Hex Bolts (x4)
- M10x50 Flat Washers (x4)



CLUB CAR PRECEDENT

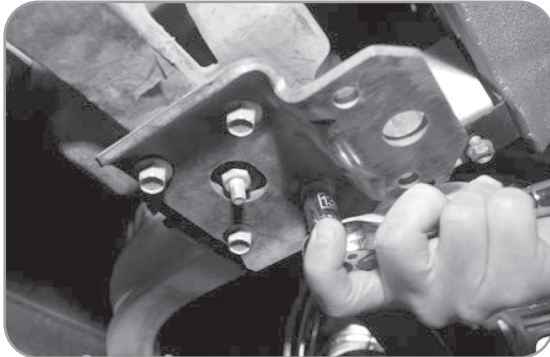
STEP 1 SUPPORT CAR WITH JACK STANDS

Place RUN/TOW switch in TOW position. Set brake and chock wheels. Lift cart using jack and support with jack stands as shown. Remove jack.



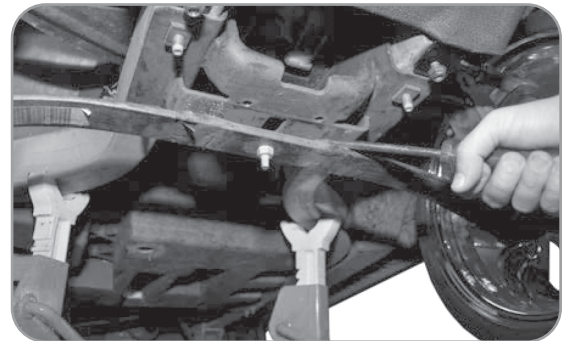
STEP 2 REMOVE LOWER PLATE

Using a 9/16" socket and wrench remove the four bolts on the lower plate.



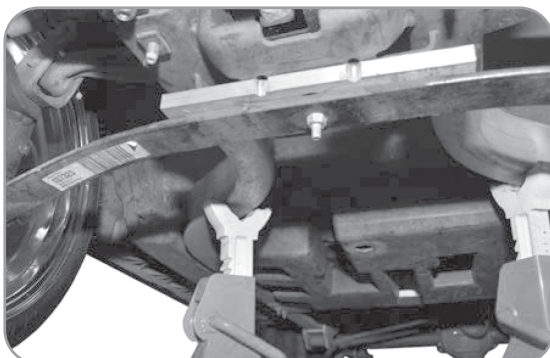
STEP 3 LOOSEN LEAF SPRING

Pry the leaf spring away from the frame to allow enough clearance for the lift bar.



STEP 4 INSTALL LIFT BAR

Place lift block between leaf spring and frame.



STEP 5 REPLACE LOWER PLATE

Reinstall lower plate using supplied hardware.

