

LIFT BAR

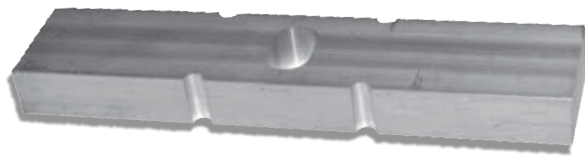
FOR CLUB CAR DS

MADE IN THE
★USA★
WITH PRIDE

BAR TO LIFT DS CAR FRAME FOR LARGER WHEELS WITH LOW-PROFILE TIRES

INCLUDED:

- Lift Bar • M8x55 Hex Bolts (x4) • M8x55 Flat Washers (x4)
- M8x55 Locking Nuts (x4)



CLUB CAR DS

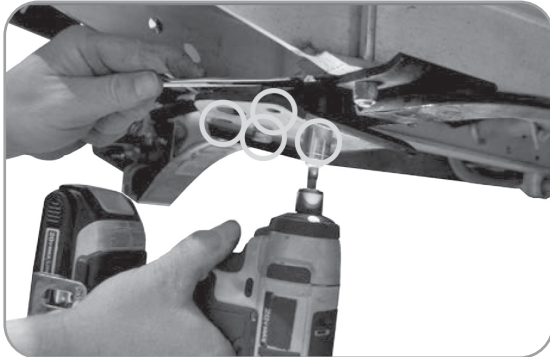
STEP 1 REMOVE FRONT WHEELS

Place RUN/TOW switch in TOW position. Set brake and chock wheels. Lift cart using jack stands and remove front wheels. Retain hardware.



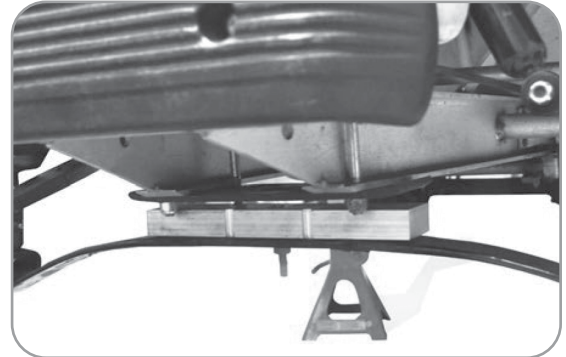
STEP 2 REMOVE LOWER PLATE

Using a 9/16" socket and wrench remove the four bolts on the lower plate.



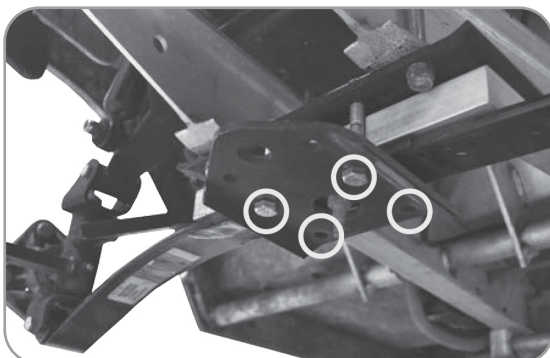
STEP 3 INSTALL LIFT BAR

Insert lift bar in between leaf spring and top plate as shown.



STEP 4 REPLACE LOWER PLATE

Using supplied hardware, reattach bottom plate and tighten.



STEP 5 REINSTALL FRONT WHEELS

Using hardware retained from Step 1, reinstall front wheels and tighten.

